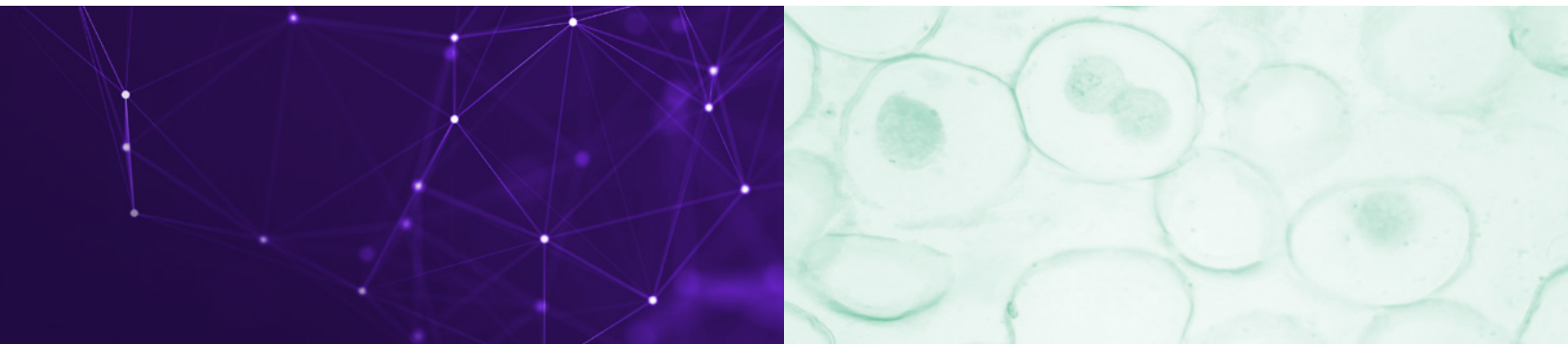


# Antech™



## LOGIQ Totus™

**Simplify and Enhance Your Ultrasound for Exceptional Patient Care**



# LOGIQ Totus™

## Vet Ultrasound

The LOGIQ Totus™ is an agile, intuitive ultrasound system designed to meet the diverse needs of veterinary care. Small, sleek, and portable, it allows you to seamlessly move between departments while providing advanced imaging and AI-powered workflow tools to enhance productivity. With LOGIQ Totus, you can focus on what matters most—delivering exceptional care to your patients.

### Portable and Efficient Workflow

The LOGIQ Totus simplifies your day with features designed to streamline every step of the imaging process:

- **AI-Powered Productivity Tools**  
Quickly identify anatomy and adjust settings with options like Auto Preset Assistant and Auto Abdominal Color Assistant.
- **End-to-End Workflow Solutions**  
Enjoy enhanced efficiency with tools such as Scan Assistant and Voice Control.
- **Easy Portability**  
A lightweight, battery-powered design and optional wireless handheld transducer make it easy to move the system wherever it's needed.

### Exceptional Imaging Quality

Powered by cSound™ Architecture, the LOGIQ Totus delivers exceptional image clarity and uniformity:

- **Enhanced Imaging with Every Scan**  
With 48x data throughput and 10x power, every pixel is in focus, reducing the need for manual adjustments.
- **Versatile Transducer Range**  
Leverage high-resolution imaging with XDclear™ probes, offering head-to-toe applications across clinical specialties.
- **Advanced Imaging Tools**  
Address complex cases with cutting-edge technologies like 2D Shear Wave Elastography, Ultrasound-Guided Attenuation Parameter (UGAP), and Volume Navigation.



## Probes Tailored for Every Need

The LOGIQ Totus supports a comprehensive range of transducers to meet a variety of veterinary imaging requirements:

**L6-24**  
6.0 – 20.0 MHz



**ML6-15-D**  
4.0 – 16.0 MHz



**C1-6-D**  
1.0 – 6.0 MHz



**C3-10D**  
2.0 – 11.0 MHz



**M5Sc-D**  
1.0-5.0 MHz



**6S-D**  
2.0 – 8.0 MHz



## Streamlined Workflow and Enhanced Care

The LOGIQ Totus combines advanced imaging capabilities with intuitive design and seamless portability, empowering you to make confident, precise decisions for every patient, every time.

## Elevate Your Practice

GET STARTED NOW



800-872-1001 us • 866-382-6937 ca  
[q-r.to/logiq-totus-25](http://q-r.to/logiq-totus-25)

# Antech™

## Learn More



800-872-1011 US

866-382-6937 CA

[antechdiagnostics.com](https://www.antechdiagnostics.com)